

THE *Vista*

2,716 SQ.FT.



D



B

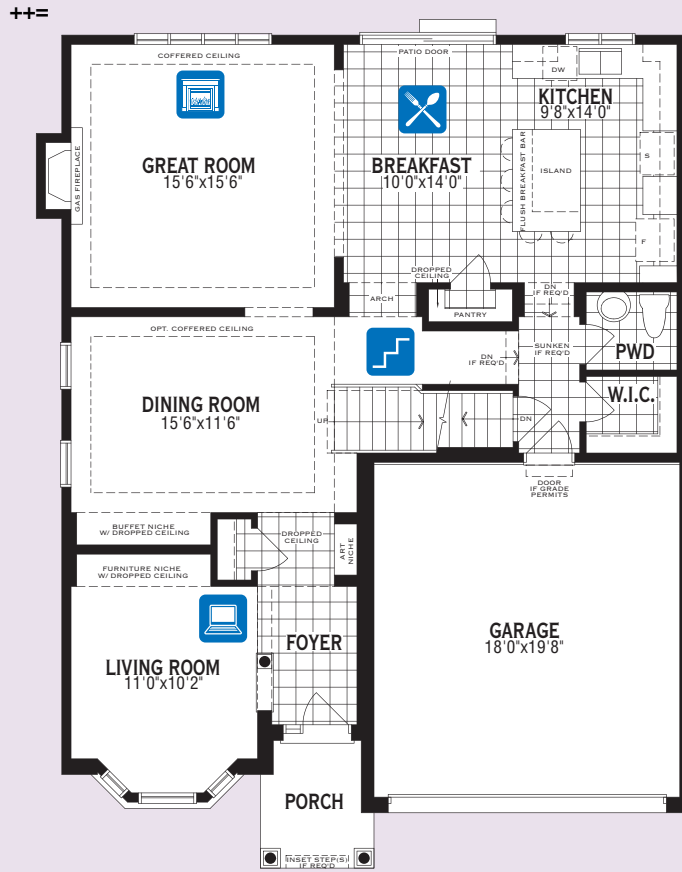


C

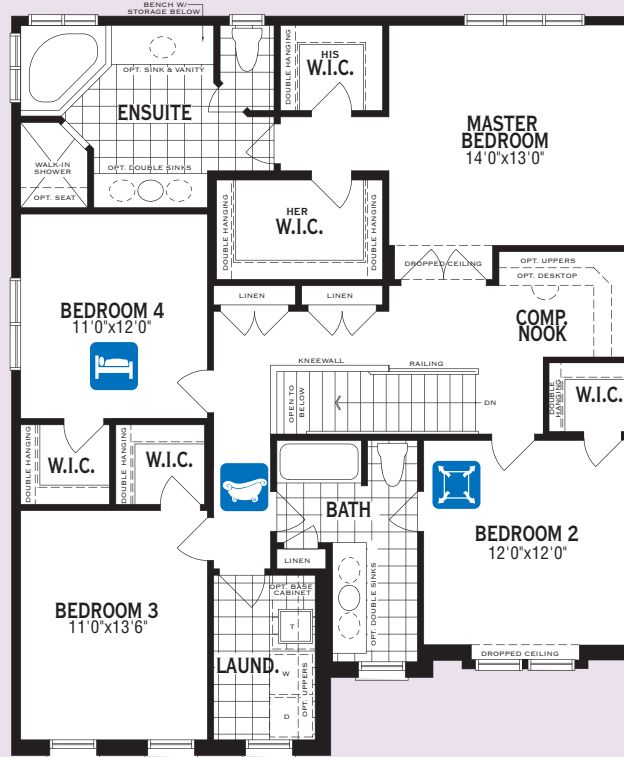


E

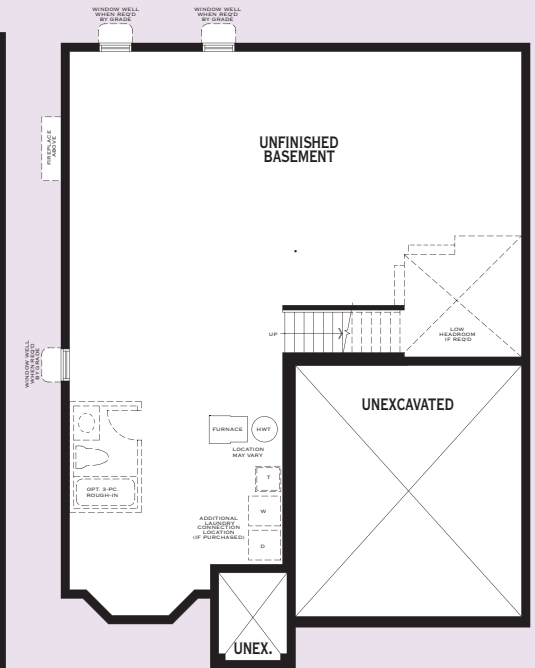
THE VISTA · 2,716 SQ.FT. · OT4333



Ground Floor Plan



Second Floor Plan



Basement Plan

All illustrations are artist's concept. Specifications, terms and conditions are subject to change without notice. These floor plans and room dimensions apply to elevation 'D' of this model type. Note that plans and room dimensions may vary according to elevation. Plan may be built as the mirror image. "Quiet wall" (where shown) means a wall in which additional insulation has been installed. This will assist in reducing, but not eliminating, ambient sound from adjoining rooms and mechanical systems. The extent of the reduction will vary depending upon various factors including, without limitation, the presence and extent of mechanical systems located in the wall. Please consult your sales representative. E.&O.E. March 2012 - Copyright 2012 - Mattamy Homes Limited. Reprint August 2012.



THE VISTA · 2,716 SQ.FT. · OT4333

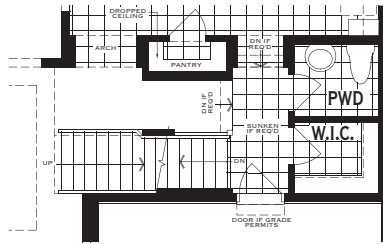
“ARCHITECT’S CHOICE” OPTIONS

Ground Floor Options

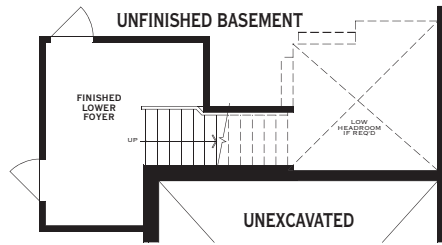


The Next Step

Ground Floor Plan

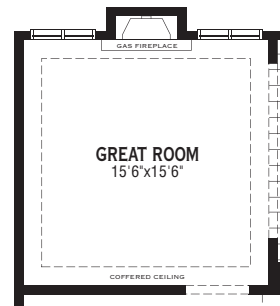


Basement Plan

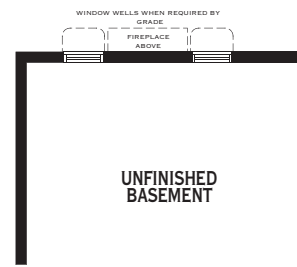


Alternate Fireplace Location

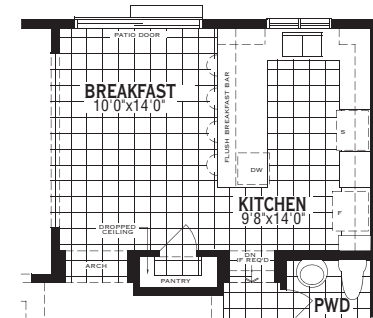
Ground Floor Plan



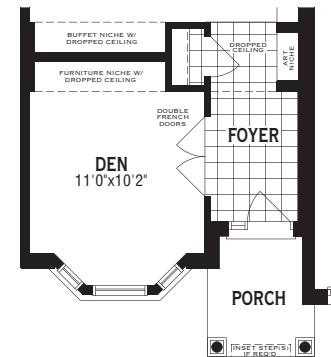
Basement Plan



Chef's Kitchen



Den w/French Door

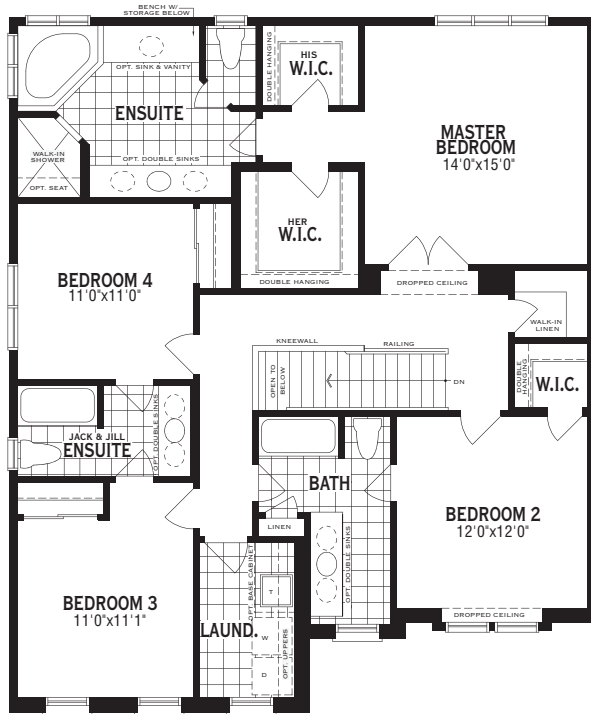


“ARCHITECT’S CHOICE” OPTIONS

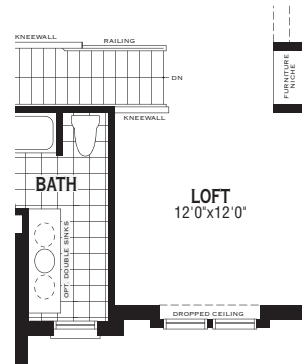
Second Floor Options



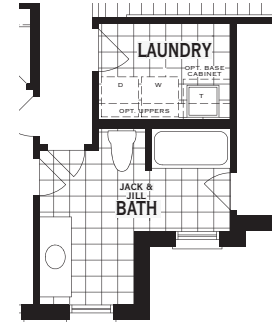
4 Bedroom w/3 Bath Plan



Loft In Lieu Of
Bedroom



Jack & Jill Bath



Second Floor Choices

0' Ceiling Package

Includes:

- Approx. 12" higher ceilings
- Taller Second Floor Windows
- Stair configuration and/or minor design changes may be required to accommodate

Basement Choices

Rec. Room Ready Package

Includes:

- Rough-in drains in predetermined location for future 3-pc bathroom
- Deeper basement windows (where applicable)